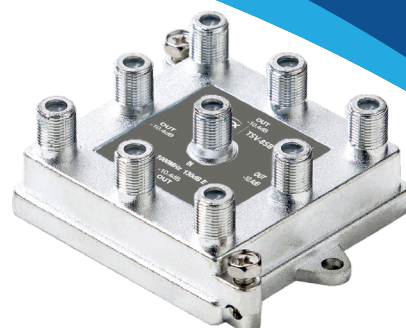


# TSV-8SB

## 1 GHz 130 dB EMI CATV Vertical Splitters



TSV-8SB  
(front view)

### Features

- Broadband 5~1000MHz frequency range
- Vertical port design allows close mounting in lock boxes for easy access of cable connections
- 1-inch centered 1/2" long precision machined F-connector threads ensure improved port-to-connector interface and accommodate external security devices
- TSV-SB series feature a solder-sealed back cover plate, providing maximum EMI-RFI shielding >-130dB and eliminating signal ingress to guarantee distortion-free pictures
- Silver-coated zinc-alloy diecast housing ensures excellent ground bonding and long corrosion-free service life in indoor/outdoor applications
- Capacitor coupling circuitry at all ports provides effective DC voltage blocking
- High-retention seizing pins provide improved connectivity to connector center lead

### Specifications

MHz	TSV-2SB Insertion Loss (max. dB)	TSV-3SB Insertion Loss (max. dB)	TSV-4SB Insertion Loss (max. dB)	TSV-6SB Insertion Loss (max. dB)	TSV-8SB Insertion Loss (max. dB)	Isolation (max. dB)	Input/Output Return Loss (min. dB)	RFI Solder back
5 to 42	3.3	3.3/6.7	6.7	8.6	10.1	35	21	> -130 dB
42 to 860	3.7	3.9/7.0	7.2	10.3	11.0	28	22	> -130 dB
860 to 1000	3.8	4.0/7.6	8	11.0	11.3	30	22	> -130 dB

### Ordering Information

Part Number	Description
TSV-2SB	2-Port Vertical Port Splitter Soldered Back
TSV-3SB	3-Port Vertical Port Splitter Soldered Back
TSV-4SB	4-Port Vertical Port Splitter Soldered Back
TSV-6SB	6-Port Vertical Port Splitter Soldered Back
TSV-8SB	8-Port Vertical Port Splitter Soldered Back

Products or features contained herein may be covered by one or more U.S. or foreign patents. Other non-ATX product and company names mentioned in this data sheet are the property of their respective companies.

© 2019 by ATX Networks Corp. and its affiliates (collectively "ATX Networks Corp."). All rights reserved. This material may not be published, broadcast, rewritten, or redistributed. Information in this document is subject to change without notice.  
Rev. 10/19 (ANW1392)



ATX

Tel: 289.204.7800 | Toll-Free: 866.YOUR.ATX | support@atx.com