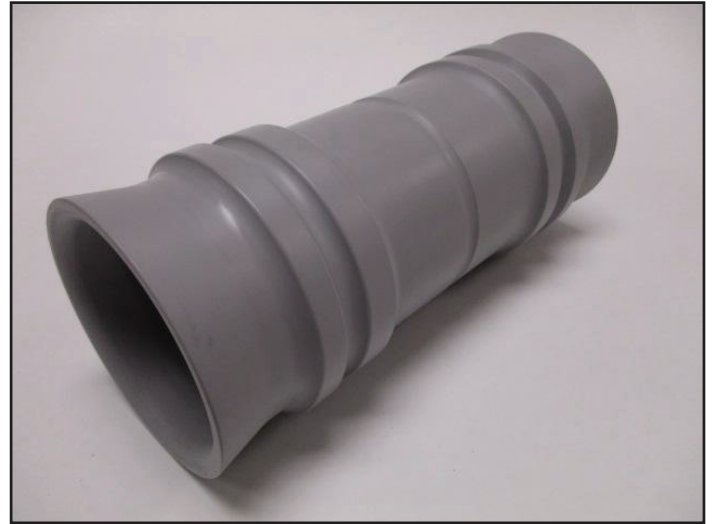


# CoBALT COUPLER SYSTEMS



Part #	Description	PSI Tested	Pull Apart Strength per ft. lbs.	Length IN (I.D.-IN.)	(O.D.-IN)	PVC Material
CC1250RR	1-1/4" HDPE Coupler	150	750	7.75	1.67	2.453 Type II
CC1500RR	1-1/2" HDPE Coupler	150	880	7.75	1.91	2.708 Type II
CC2000RR	2" HDPE Coupler	150	940	7.75	2.39	3.23 Type II
CC2000RS	2" HDPE to 2" PVC Glue Slip Coupler	150	940	7.75	2.39	3.23 Type II
CC3000RS	3" HDPE to 3" PVC Glue Slip Coupler	150	1630	8.5	3.502	4.52 Type II
CC4000RS	4" HDPE to 4" PVC Glue Slip Coupler	150	1870	9	4.504	5.602 Type II

- A true one person installation with no special tools required.
- Pressure tested to over 150 psi.
- Pull apart strength up to 1800 lbs.
- Tapered design to help couple out of round HDPE.
- Tapered design to help ease installation.
- Multiple patents pending.
- UL listing pending.
- The fastest and strongest coupling system on the market today.
- Made in the USA