

MAXCELL® CASE STUDY

Broadband Service Provider

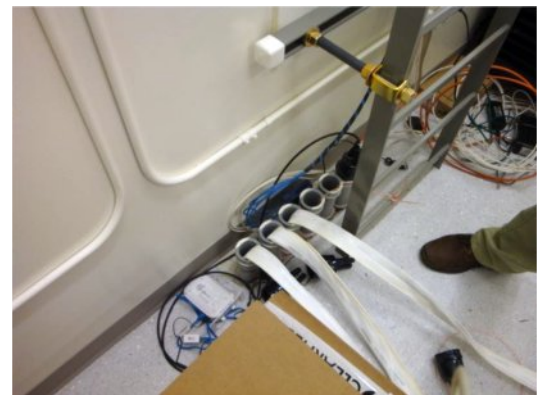
As we all know.... Nothing goes exactly as planned, in construction. You never know what a project will entail until you get started. The MaxCell team found that out when we installed our MaxCell Edge product with a new contractor.

Our team started off with needing to add MaxCell Edge in a vacant 2" conduit. Instead of using the entire 2" conduit space, as with HDPE, the MaxCell team was able to make space for three (3) cables – with our 2" 3-cell product. We were able to install the one cable that was needed and keep two (2) open spaces for future use. Little did our team know how soon that would be.

In the initial run, each section contained three runs of two with a total footage of 1260 ft. The total time on the project site was less than three (3) hours, including the replacement of jet line with mule tape and clean up. Each section was hand pulled very easy, even with the large count fiber.

Later that same day our team were asked to add a second 112 count fiber cable (.08). It was placed in the second cell of MaxCell Edge, with future plans to add a smaller count fiber to populate the remaining cell.

Bottom line, we are ready to help you save money and time.



888.387.3828 | WWW.MAXCELL.US

D210824