

THE WORLD'S MOST FLEXIBLE, MOST SUSTAINABLE INNERDUCT



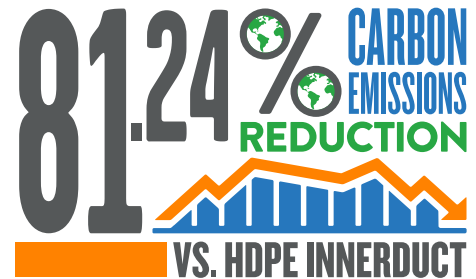
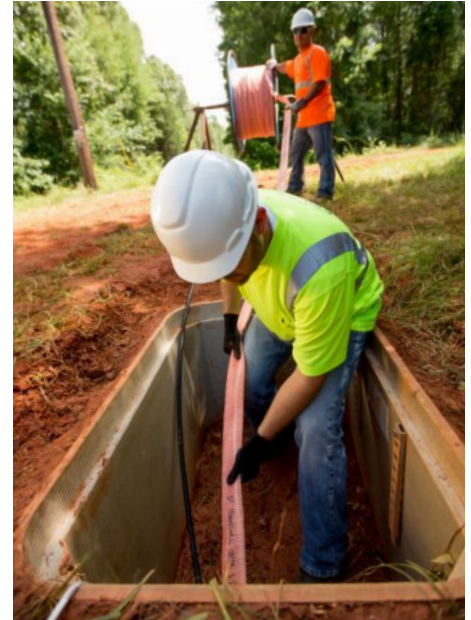
Future Network Flexibility

As consumer awareness and concern about climate change and the environment grow, companies are taking steps to reduce their carbon footprint and demonstrate their commitment to sound environmental stewardship.

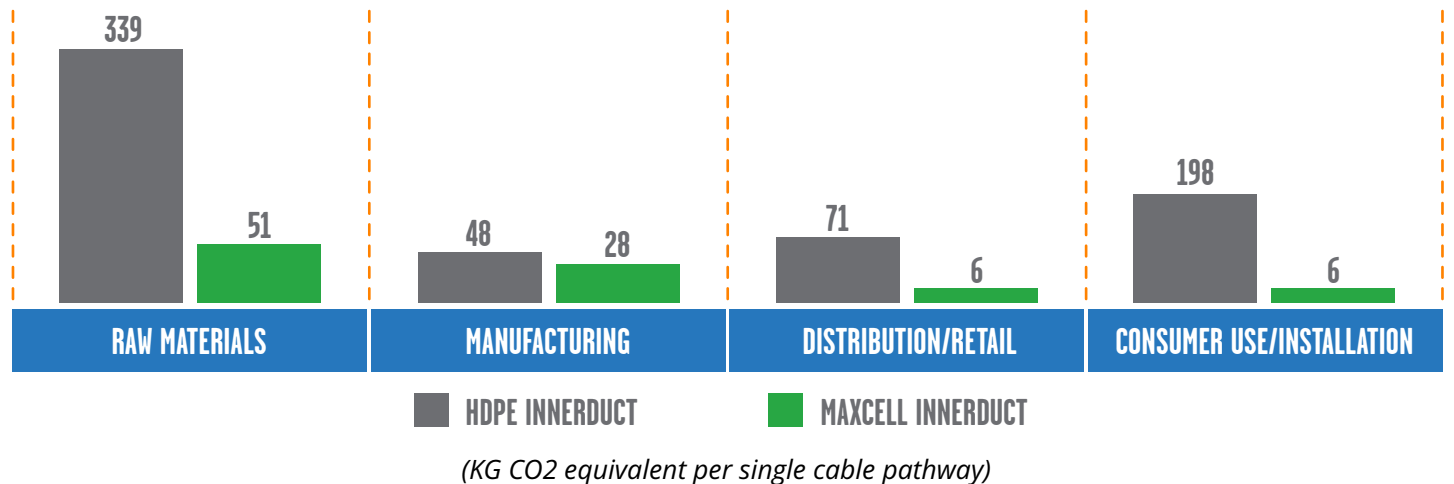
Designed specifically for the network construction industry, MaxCell® is a flexible fabric innerduct that provides cable pathway functionality at a fraction of the cost, labor, energy, space and carbon emissions versus HDPE innerduct.

- For every million feet of single-cell MaxCell installed instead of HDPE innerduct, the resulting carbon savings are 644 metric tons CO2 equivalent. *
- Green House Gas (GHG) savings are equal to the annual GHG emissions from over 126 passenger vehicles on the road or over 72,000 gallons of gasoline consumed.
- Over 600 million feet of MaxCell innerduct has been successfully installed around the globe.

* Data collected by Bent Branch Strategies



CARBON FOOTPRINT COMPARISON



If you want to increase your productivity, improve your bottom line and reduce your carbon footprint, call MaxCell today at 888.387.3828 or visit us online at www.maxcell.us.

220216

