

# THE WORLD'S MOST FLEXIBLE, MOST SUSTAINABLE INNERDUCT



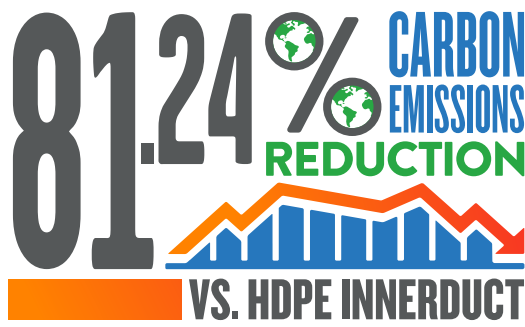
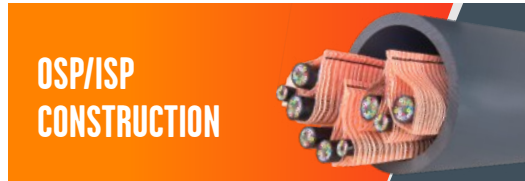
Future Network Flexibility

MaxCell® has been helping companies reduce their carbon footprint and demonstrate their commitment to sound environmental stewardship for over 12 years.

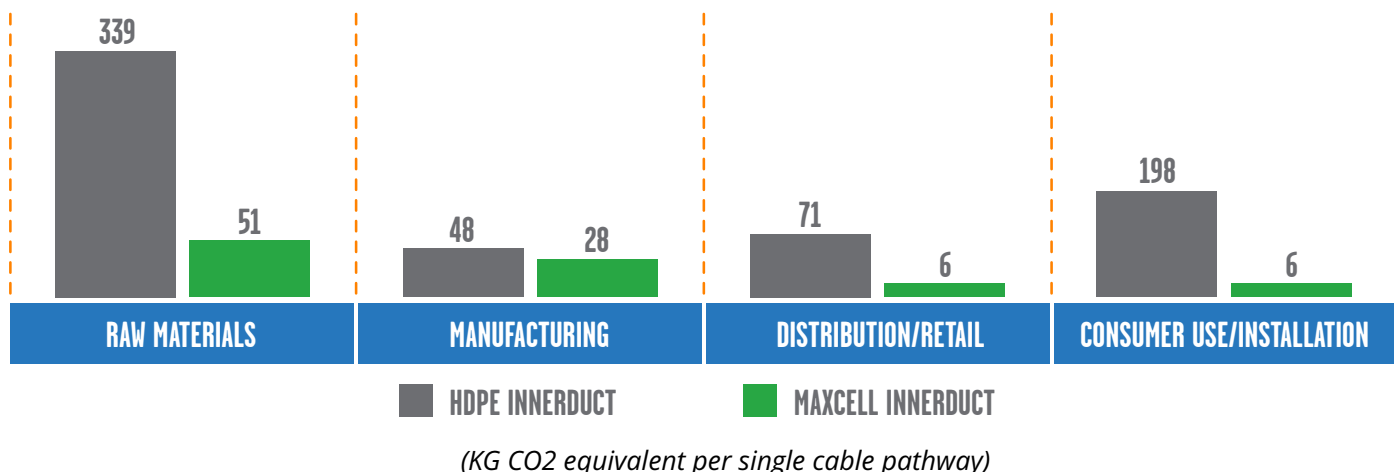
Designed specifically for the network construction industry, MaxCell is a flexible fabric innerduct that provides cable pathway functionality at a fraction of the cost, labor, energy, space and carbon emissions versus HDPE innerduct.

- For every million feet of single-cell MaxCell installed instead of HDPE innerduct, the resulting carbon savings are 644 metric tons CO2 equivalent. \*
- Green House Gas (GHG) savings are equal to the annual GHG emissions from over 126 passenger vehicles on the road or over 72,000 gallons of gasoline consumed.
- Over 600 million feet of MaxCell innerduct has been successfully installed around the globe.

\* Data collected by Bent Branch Strategies.  
Visit [www.maxcell.us/green.aspx](http://www.maxcell.us/green.aspx) for more information.



## CARBON FOOTPRINT COMPARISON



If you want to increase your productivity, improve your bottom line and reduce your carbon footprint, call MaxCell today at 888.387.3828 or visit us online at [www.maxcellinnerduct.eu](http://www.maxcellinnerduct.eu).

230313

